

# Simile Match-Up

## What to Do

- Read the phrases in both columns.
- Join the phrases with a line to create meaningful similes. The first one is done for you.

## What You Need

- dry-erase marker
- pencil and paper

Mr. Dilly Dally is as slow as

freshly fallen snow.

When she ran, she was as quick as

walking in quicksand.

Her dress is as soft and white as

a rainbow.

On the subway, we were as squished as

a snail.

We always said he was as wise as

waves on a seashore.

My legs were so tired I felt like I was

cool as a cucumber in her sundress.

The jokes just kept coming like

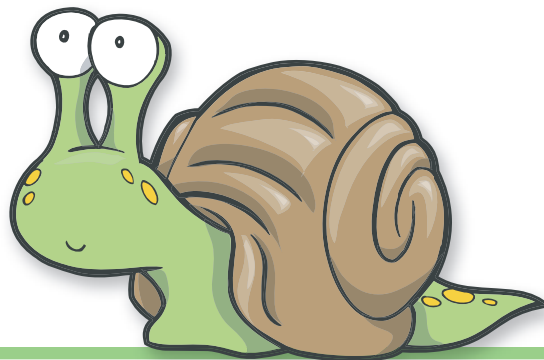
a bolt of lightning.

The image in my mind was as colourful as

an owl.

She looked as

sardines in a can.



## Try It!

Write your own simile to describe someone you know. Remember to include the words **like** or **as** in your comparison. Share your simile with a partner.

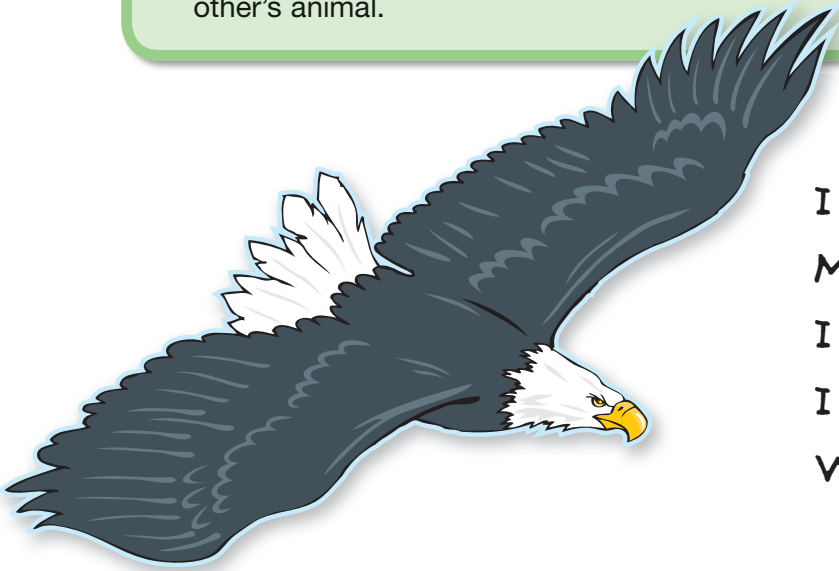
# Descriptions Using Similes

## What to Do

- Think of an animal that you would like to describe. Write a description of your animal using four similes.
- Write each simile on a separate line. Try to write similes that describe different characteristics of your animal. On the last line, write "What am I?"
- Exchange your description with a partner and try to guess each other's animal.

## What You Need

- dry-erase marker
- pencil and paper



I glide like a fish through water.

My feathers are as smooth as silk.

I can see as far as the horizon.

I attack like a ferocious lion.

What am I?

Simile 1: \_\_\_\_\_

Simile 2: \_\_\_\_\_

Simile 3: \_\_\_\_\_

Simile 4: \_\_\_\_\_

## Try It!

Illustrate your description showing as many characteristics described by the similes as you can.